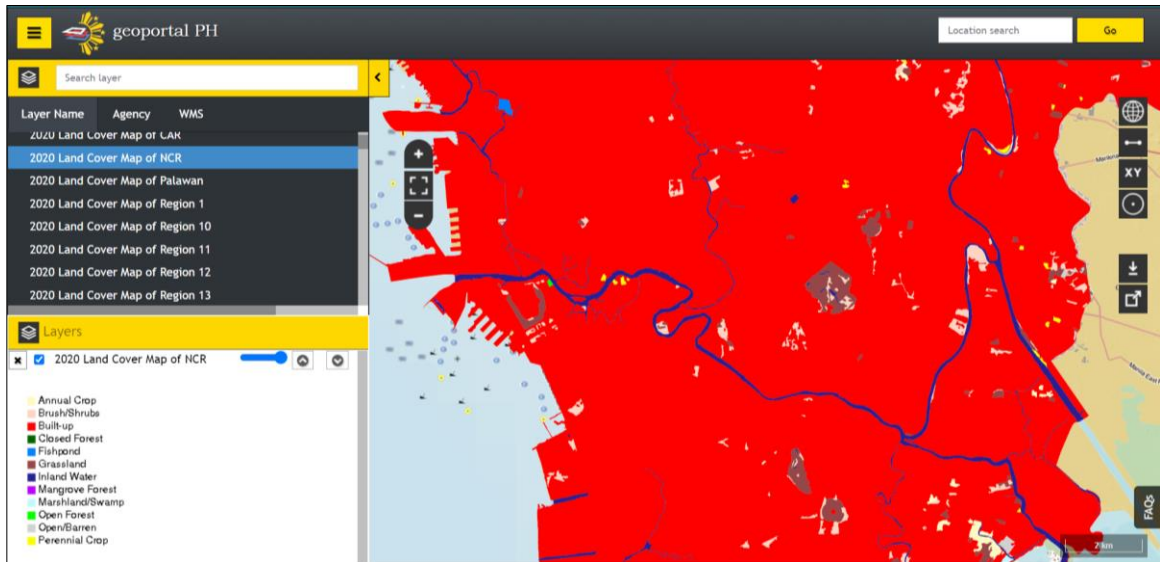
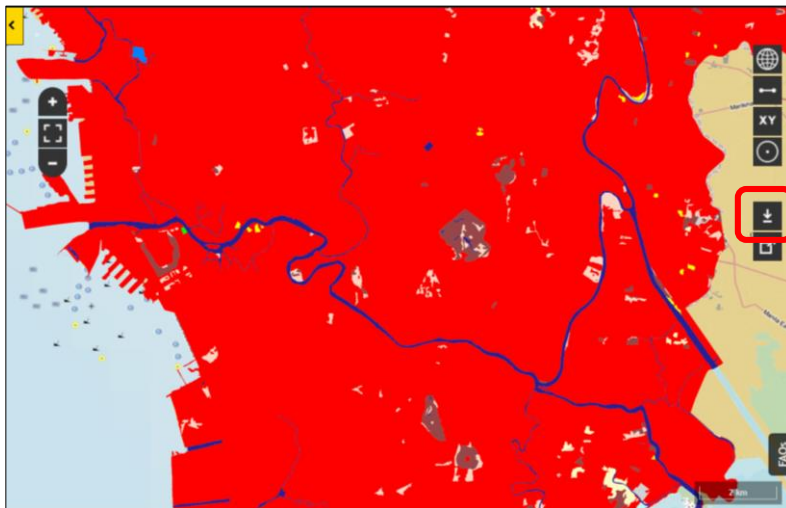


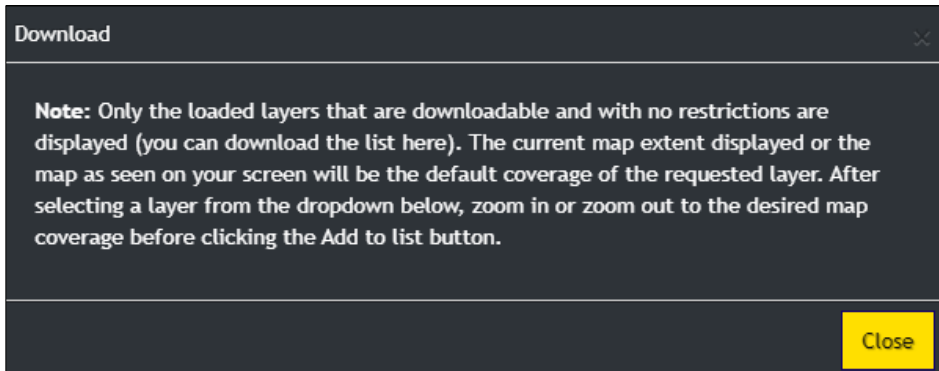
3. Zoom-in to the desired coverage or area of interest (AOI).
Note: The current map displayed on the screen will be the coverage or extent of the layer for downloading.
The coverage or extent will also include the feature outside the current map display if it is part of the selected line or polygon feature.



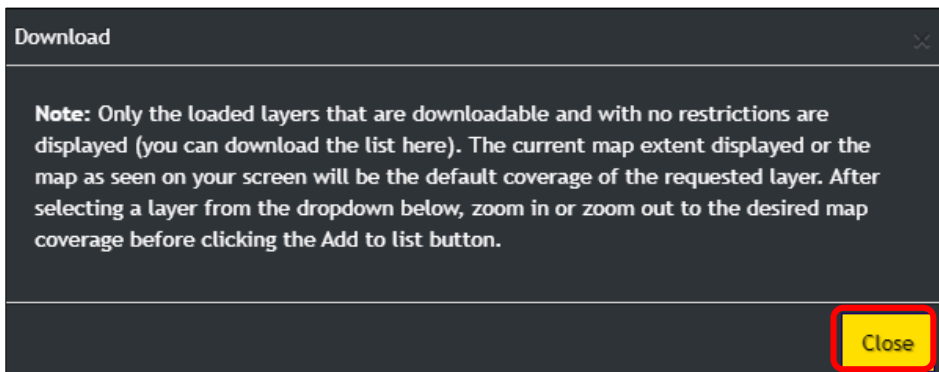
4. Click the **Download** button.



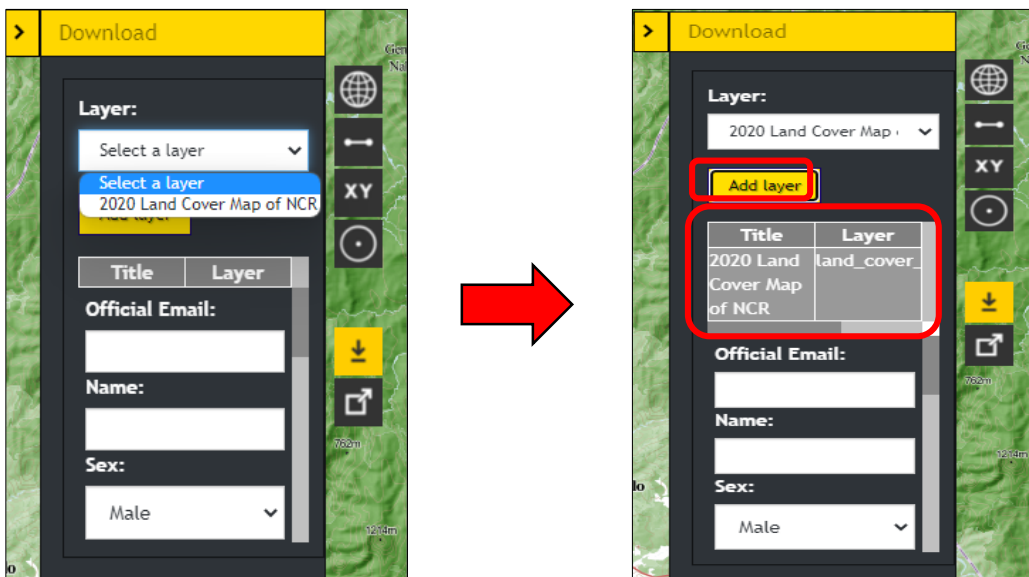
The following message will be displayed.



5. Click the **Close** button.



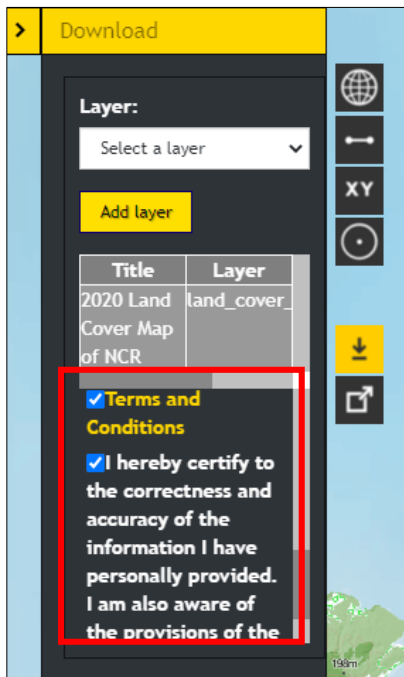
6. Select a layer from the dropdown and click the **Add layer** button to add it to the **Download** list. Multiple layers can be added to the download list.



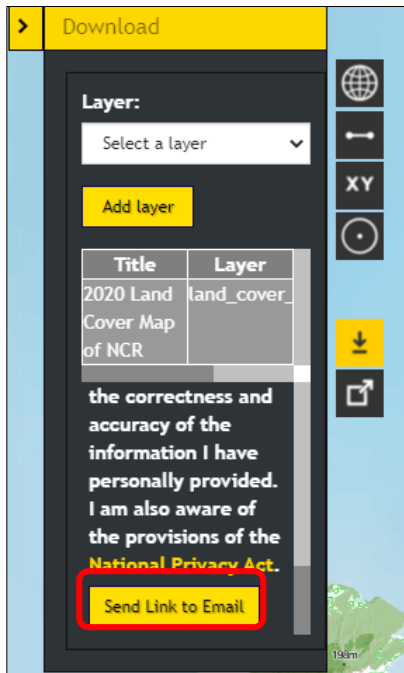
7. Input the following information:

- Official Email
- Name
- Sex
- Address
- Office/Agency
- Purpose
- Official Contact No

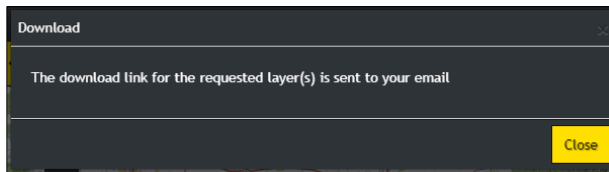
8. Accept the **Terms and Conditions** and the provisions of the **National Privacy Act**.



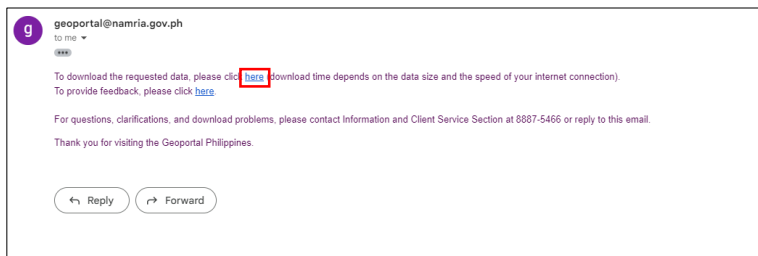
9. Click the **Send Link to Email** button



The following message will be displayed and the download link will be sent to the email.



10. Go to the provided email and click the 1st link.



You will be redirected to the GP Download page.

Geoportal Philippines

Download link(s) will expire on
December 20th, 2022 (Philippine Time)

#	Layer name	ID	
1	2020 Land Cover Map of NCR	land_cover_map_ncr_2020	Download

11. Click the **Download** button. The file will be saved in zip format in the local drive.

Geoportal Philippines

Download link(s) will expire on
December 20th, 2022 (Philippine Time)

#	Layer name	ID	
1	2020 Land Cover Map of NCR	land_cover_map_ncr_2020	Download

 land_cover_map_ncr_2020.zip